



6.-7. MAIJS

RALLIJS KURZEME



2016



ATRUMA FESTIVALS

RALLY GUIDE 1

WWW.RALLYKURZEME.IV





ATRUMA FESTIVALS **2016**
6.-7. MAIJA



1. INTRODUCTION

1.1. Welcome note

Spring is right around the corner and we invite you to begin the gravel rally season in Liepāja, at the Festival of Speed - rally “Kurzeme 2016” that will take place on May 6 – 7 and will be the first gravel rally in Baltic countries this year.

This is not the first time during fifty years history of rally Kurzeme, when it has changed it's dates. It has been both late autumn, both peak heat in July, both the last weekend of August. Hard surface of gravel roads let us rally much earlier after winter than anywhere else, therefore “Kurzeme” this year is taking place early in the spring.

We have prepared more than 120 kilometres in special stages, winding along the fast and attractive Kurzeme roads. As every year, drivers will have to overcome interesting and curvy turns, tricky over crests and prove their skills on the difficult still very enjoying stages, loved by everybody involved in rallies. Meanwhile, rally sprint distance is prepared in a compact mode with both recce and stages on Friday, May 6. Full rally distance will continue in the Saturday, May 7.

Rally “Kurzeme” will be a first event of recently established FIA Baltic Rally Trophy.

LADA CUP is newcomer to the program of the Festival of Speed. We kindly invite competitors with popular Lada rally cars to participate in separate qualification, as well as take out of garage Moskvich, Volga, ZAZ and other historical rally cars. These cars will drive through stages before the main group of rally competitors.

We welcome you to enjoy atmosphere of Liepaja!

On behalf of organiser's team,

Uldis Hmieļevskis

General manager of Rally Kurzeme 2016, Festival of Speed



1.2. Regulatory power of this document

This document has no regulatory power – it is just for information only. All information can be changed or added, updates will be published on www.rallykurzeme.lv, www.autorally.lv.



ATRUMA FESTIVALS 2016
6.-7. MAIJA



2. COMPETITIONS and CLASSIFICATIONS

Special stages of rally “Kurzeme” will take place on Friday and Saturday, May 6-7, with total length up to 125 km. We invite to collect documents and participate in shakedown on Thursday, May 5. Reconnaissance is taking place on Friday, May 6, as well as first five stages in Aizpute, Durbe and Priekule region. There will be seven gravel stages and two asphalt city stages in Liepaja on Saturday, May 7. Rallysprint competitors will have one day race – with reconnaissance on Friday morning and stages on evening.

2.1. FIA Baltic Rally Trophy – 1st event

Rally “Kurzeme” will have honour to open the new regional championship initiated by FIA. In this series points will be collected in several rallies in Estonia, Lithuania, Finland. Winners of four-wheel drive and front-wheel drive classifications will obtain possibility to participate in final even in Europe. In the final competition winners of various regional series will compete to find out winner of European trophy.

2.2. Latvian Rally Championship – 2nd event

Rally distance will consist of 14 stages with total length over 120 km. Five special stages will take place on Friday evening, while remaining nine on Saturday. Rally centre, opening and prize giving ceremony will be hosted by Fontaine hotel and club. Meanwhile Liepaja city special stage will connect rock music history of the city concert garden “Pūt, Vējiņi!” with today’s entertainment district – promenade, Fontaine club and concert hall “Great Amber”.

2.3. Latvian Rallysprint Championship – 4th event

Route of rallysprint will consist of five special stages with total length of 53 kilometres. Rallysprint will have one day format. Reconnaissance is planned on Friday morning, and competition on Friday evening. Rallysprint competitors will have possibility to participate in full rally distance.

2.4. LADA CUP

These rally veterans will have the honour to open the rally competition, promoting the cars that once were the winners of champion titles. LADA CUP competitions will happen in two classifications – with engines up to 1.6 litres and rear wheel drive and Lada Open Cup where both front wheel drive cars, both rebuilt Lada cars with an engine over 1,6 litres and other historic rally cars manufactured in ex-Soviet Union - Moskvich, Volga and ZAZ brands. LADA CUP participants will start the race before the participants of rally and rally-sprint in a separate channel.

2.5. TRUCK CUP

History of rally in Liepaja started in 1965 with truck rally. Therefore this year special entry group has been created for the trucks. GAZ truck competitors from Estonia, Lithuania and Latvia are welcome to participate in Rally “Kurzeme 2016”.

2.6. Overall classification

Three fastest four-wheel drive and three fastest two-wheel drive competitors will be awarded.

2.7. Latvian speed boat championship – 1st event

Liepaja trade channel will belong to the fastest Latvian speed boats. As it was last year, here you can watch both rally city stage, both races of the fastest boats.



ATRUMA FESTIVALS 2016
6.-7. MAIJA



3. CONTACT DETAILS

4.1 Rally organisers requisites:

Society "Liepājas Rallija Komanda"

Reg. nr. 50008110141, PVN reg.nr. LV50008110141

Adress: Ezermalas iela 7, Liepāja, LV 3401

Bank: AS Swedbank, kods: HABALV22, konts: LV50HABA0551016419859,

4.2. Organiser's office :

Society "Liepājas Rallija Komanda"

Dūņu street 8, Liepāja, Latvija

Internet website: www.rallykurzeme.lv

4.3. Rally organisers:

General manager	Uldis Hmieļevskis	+371 29440526	uldis@rallykurzeme.lv
Route manager	Aigars Bite	+371 29905725	aigars@rallykurzeme.lv
Marketing manager	Ieva Hmieļevska	+371 26596186	ieva@rallykurzeme.lv
Project manager	Ieva Jorena-Auzniece	+371 26445678	info@rallykurzeme.lv
Project manager	Lelde Jagmina	+371 26343014	lelde@rallykurzeme.lv
Media and competitor coordinator	Dzintars Hmieļevskis	+371 25954279	dzintars@rallykurzeme.lv
Liepāja city stage coordinator	Aigars Kārklīšs	+371 28357043	aigars@loc.lv
LADA CUP coordinator	Dzintars Kaulakalns	+371 26895990 +44 774 3747 200	ladavftscup@gmail.com

4.3. Rally centre and official information notice board

Place: Fontaine Royal Hotel, Stūrmaņu iela 1, Liepāja

Date	Time
May 05, 2016	14:00 – 21:00
May 06, 2016	10:00 – 23:59
May 07, 2016	09:00 – 22:30

Electronic official notice board: www.rallykurzeme.lv

4.4. Media

Media accreditation form will be available on the web site www.rallykurzeme.lv. In the case of other inquiries please contact communications manager of Festival of Speed – Rally "Kurzeme" Mr. Dzintars Hmieļevskis (mob.: +371 25954279, e-pasts: dzintars@rallykurzeme.lv).

Rallija „Kurzeme” mājas lapa un sociālo tīklu konti

- www.rallykurzeme.lv
- www.autorally.lv
- www.twitter.com/rallykurzeme
- www.facebook.com/rallykurzeme
- www.draugiem.lv/rallykurzeme

Web site and social media of Rally „Kurzeme”

- www.rallykurzeme.lv
- www.autorally.lv
- www.twitter.com/rallykurzeme
- www.facebook.com/rallykurzeme
- www.draugiem.lv/rallykurzeme

www.rallykurzeme.lv





ATRUMA FESTIVALS **2016**
6.-7. MAIJA



4. PROGRAMME

1.1 Schedule before the rally week

Monday, March 07, 2016	
12:00	Publication of Rally Guide 1, start of forbidden territory
Monday, March 14, 2016	
12:00	Publication of Rally Regulations*
12:00	Opening date for entries*
12:00	Publication of the Entry list (in seeded order)*
Monday, April 25, 2016	
18:00	Publication of Rally Guide 2
Friday, April 29, 2016	
23:00	Closing date for entries
23:00	Closing date for additional space and other requests for service areas
23:00	Closing date of shakedown applications and Entry fee
Informācija tiks publicēta www.autorally.lv	
* subject to change	

1.2 Schedule of the rally week

Monday, May 2, 2016	
18:00	Publication of the provisional starting order
Tuesday, May 3, 2016	
From 12:00	Registering for the administrative check and scrutineering
Thursday, May 5, 2016	
14:00 - 20:00	Administrative checks, Road Book and GPS distribution
14:00	Opening of Press Centre and media accreditation
15:00-19:00	Technical scrutineering, marking and sealing for shakedown vehicles
16:00-22:00	Reconnaissance SS6/8, SS7/9
18:00-21:30	Shakedown
Friday, May 6, 2016	
07:00-15:00	Reconnaissance
09:00-14:00	Technical scrutineering, marking and sealing
15:00	Publication of pre-start area schedule
15:15	1st meeting of Stewards
16:15	Publication of starting list
16:15	Start area before the rally start and GPS equipment check
16:30	Ceremonial start of the Rally
17:15	Start of Leg 1 TCO
22:35	Finish of Leg 1
<i>There is overnight parc-ferme between Leg 1 and Leg 2.</i>	



ATRUMA FESTIVALS 2016
6.-7. MAIJA



Saturday, May 7, 2016	
9:00	Publication of starting list for Leg 2
10:00	Start of Leg 2
19:05	Finish of Leg 2
no 19:05	Parc Fermè after finish
no 19:05	Final Scrutineering
no 20:30	Prize giving ceremony
21:30	3rd meeting of Stewards
22:00	Posting of the provisional final classification
22:30	Posting of the official final classification

Programme for rallysprint, May 06

Friday, May 6, 2016	
10:00 - 12:00	Administrative checks, Road Book and GPS distribution
07:00 – 15:00	Reconnaissance
10:00 - 15:00	Technical scrutineering, marking and sealing
15:00	Publication of pre-start area schedule
15:15	1st meeting of Stewards
16:15	Publication of starting list
16:15	Start area before the rally start and GPS equipment check
16:30	Ceremonial start of the Rally
17:15	Start of Leg 1 TC0
21:40	Rallysprint finish
No 23:15	Prize giving ceremony
23:59	2nd meeting of Stewards
00:15	Posting of the provisional final classification
00:45	Posting of the official final classification

5. INFORMATION TO COMPETITORS

5.1. CHAMPIONSHIPS AND CLASSIFICATIONS

5.1.1. Latvian Rally Championship 2nd event (LRC1, LRC2, LRC3, RK1, RK2, RK Historic, LRC Junior, team classification)

5.1.2. Latvian Rallysprint Championship 4th event (1600, 4WD, 2WD Open, 4WD Open, Junior cup)

5.1.3. RALLY KURZEME LADA CUP classification (LADA CLASSIC CUP, LADA CUP OPEN)

5.1.4. RALLY KURZEME TRUCK CUP classification

5.1.5. RALLY KURZEME overall classification

5.1.6. FIA Baltic Rally Trophy (RC2, RGT, RC3, RC4, RC5)

www.rallykurzeme.lv





ATRUMA FESTIVALS 2016
6.-7. MAIJA



5.2. Entry fee

Rally Kurzeme (full competition distance)	€ 450,00
Rallysprint	€ 250,00
LADA CUP classification	€ 150,00*
TRUCK CUP classification	€ 000,00

All competitors who wish to receive an invoice for entry fee, shakedown and/or additional place in the Service park, have to enter their invoice details in the application on www.autorally.lv. The competitors will receive the invoices during the Administrative check.

**LADA CUP competitors, that arrive to Liepaja for more than 1000 km distance, will have reduced entry fee € 100,00.*

5.3. Number of entrants

Maximum number of entries is 90. In case the Organiser receives more entries, crews will be selected by opinion of Organiser.

5.4. Entry package

Name	Quantity
Road Book	1
Rally guide 2	1
Supplementary regulations	1
Service Road Book	1
Service sticker	1
Additional service sticker (Auxiliary)	1
Competition car stickers	1
Recce sticker	1
Competitor pass	2
Rally pass	4
Service area	54 m2 (LRČ teams – 70m2)

Additionally, the organizer hands out to the LRČ team 1 set of documents, 1 VIP guest entrance package and 1 "service" car sticker.

Registered competitors and teams can purchase additional rally passes and VIP guest entrance packages with 30% discount (price with discount for rally pass €10,00, VIP guest entrance package €60,00 (includes 2 VIP cards, programme, 1 VIP car sticker).

We kindly ask Rally Kurzeme competitors to take into consideration and inform team members that in any location of competitions and prize giving ceremony you should wear Rally Kurzeme competitor or rally pass.



ATRUMA FESTIVALS 2016
6.-7. MAIJA



6. SCRUTINEERING, MARKING AND SEALING

Pre-start scrutineering, marking and sealing: AS "Liepājas Autobusu Parks", Cukura Street 8/16, Liepāja (N 56.5363, E 21.0551).

Chief scrutineer: Gints Freimanis, mob. +371 29277998

7. SHAKEDOWN

Information about shakedown will be published in Rally Guide 2.

8. RECONNAISSANCE

Route of rally is designed in the way so it is possible to reconnaissance in one day – Friday, May 06. Still, to make the schedule more relaxed, we recommend to do recce of SS6/8 and SS7/9 on Thursday, May 05. These stages are located not far away from shakedown, therefore it is possible to do both shakedown, both recce of SS 6/8 and SS7/9.

9. SERVICE PARK AND TRAILER PARK

Location: Zemnieku street 30B, Liepāja (GPS N 56.5190, E 21.0250)

Time: From May 05 14:00 till May 07 22:00

Organiser of service park: Mr Kārlis Veiders + 371 26514704

For competitors convenience it will be possible to connect to the electricity in the service park. Teams themselves should ensure electrical cables 80 metres of length. Request for electrical connection to be sent by April 25, 2016 to info@rallykurzeme.lv.

Type of electrical connection	Price
220V, 15A (1-phase connection)	€ 75,00
380V, 20A (3-phase connection)	€ 150,00

All competitors who wish to receive an invoice for electrical connection, have to send their requisites together with request to info@rallykurzeme.lv. The competitors will receive the invoices during the Administrative check.







ATRUMA FESTIVALS 2016
6.-7. MAIJA



10. LIEPĀJA

2.1 Vispārīga informācija par Liepāju

-  Koordinātas: 56° 30' 42" Z, 21° 0' 50" A
-  Iedzīvotāji: 72 110
-  Platība: 60,37 km²
-  Pilsētas tiesības no 1625. gada 18. marta

Liepāja was inaugurated as a town in 1625 and is a major seaport located between the Baltic Sea and Liepāja Lake which is connected to the sea by the Trade Canal. Liepāja with a population of about 80 thousand is the third biggest city in Latvia and the tenth biggest in the Baltic States.

Sea with the widest beach in the country, relaxed leisure, beautiful nature and splendid sunsets – those are just few of countless things that allures here dwellers of Liepāja, as well as people from other places in Latvia positively affected by Liepāja and guests from Europe and other countries of the world.

2.2 Quality of life

Liepāja provides great opportunities for sports activities – you can play ice hockey or skate in the Ice hall which is located almost in the center of the city. Liepāja Olympic Center offers a wide range of activities with sports arena for basketball, football or concerts, boxing, volleyball, table tennis and wrestling halls, as well as fitness, relaxation and medical centers, swimming pool and SPA.

Liepāja, as port city is significant centre of regional development. Port of Liepāja is the third biggest port in Latvia, not frosting over in the winter. It is modern and multifunctional trade port and internationally significant transport junction. The operations of the port are directly connected with the special economic zone, which structures overall business activities, thus, along with the services provided by the port, establishing enabling environment for development of production and value added services.

Liepāja is known for its abundance of cultural, creativity and sports traditions. Creativity and freethinking is the brand of Liepāja as it is the place where Latvian rock music was born.

Summers in Liepāja are especially fulfilled with various events for every taste – starting with grand beach festival “Summer Sound”, Festival of Speed – Rally “Kurzeme”, numerous concerts and sports events when tens of thousands guests gather in Liepāja.

Also at the time of the year, when sun is not shining so much, cultural and art life in Liepāja continues, offering various exhibitions, expositions and concerts, as well as other creative activities. Specialties of Liepāja are Liepāja theater performances, recognized in Latvia and other countries and concerts of Liepāja Symphony orchestra in the new concerthall “Great Amber”. Cathedrals and churches with history extending in the past lasting for centuries will surprise every guest of Liepāja with luxurious interiors. Whereas warm atmosphere in the coffee-houses and restaurants will help to renew energy to any traveler.

People say that there is indescribable aura in Liepāja; they call it a proud and mysterious city of friendly people and golden beach.



ATRUMA FESTIVALS 2016
6.-7. MAIJA



11. PROVISIONAL ITINERARY



FESTIVAL OF SPEED 2016
MAY 6-7



ITINERARY - LEG 1 - RALLY		(Sunrise: 05:39, Sunset: 21:28)			Friday, 6th of May 2016	
TC/SS LK/PS	Location Vietas nosaukums	SS km PS km	Liaison km Pābrauciens	Total km Kopā	Target time Laika norma	1st car 1. a/m laiks
0	Start Podium - Liepāja					17:15
1			35,20	35,20	0:42	17:57
SS 1		12,08				18:00
2			14,25	26,33	0:32	18:32
SS 2		9,49				18:35
3			1,95	11,44	0:17	18:52
SS 3		10,57				18:55
3A			16,20	26,77	0:57	19:52
RZ	Remote refuel					
1	Distance to next refuel	21,57	67,33	88,90		
4			7,90	7,90	0:20	20:12
SS 4		12,08				20:15
5			15,12	27,20	0:27	20:42
SS 5		9,49				20:45
5A	Flexi Service A Tehnical zone IN		44,31	53,80	0:55	21:40
5B	Flexi Service A Liepāja IN				0:03	21:43
	Service A Liepāja	53,71	134,93	188,64	0:45	
5C	Flexi Service A Liepāja OUT					22:28
5D	Parc ferme Liepāja IN		0,80	0,80	0:07	22:35
<i>All cars (except re-starting crews) to be in Parc Ferme no later than 00:15</i>						
Leg 1 totals / 1.aplis kopā		53,71	135,73	189,44		

Section / Sekcija 1



ITINERARY - DAY 2 - RALLY							(Sunrise: 05:37, Sunset: 21:30)	Saturday 7th of May 2016
TC/SS LK/PS	Location Vietas nosaukums	SS km PS km	Liaison km Pārbrauciens	Total km Kopā	Target time Laika norma	1st car due 1. a/m laiks		
5E	Parce ferme Liepāja OUT/ Service IN					10:00		
	Service B Liepāja	37,08	115,32	152,40	0:15			
5F	Service B Liepāja OUT					10:15		
RZ	Refuel Liepāja							
2	Distance to next refuel	18,54	50,06	68,60				
6			36,80	36,80	0:47	11:02		
SS 6		16,40				11:05		
7			3,80	20,20	0:22	11:27		
SS 7		2,14				11:30		
7A			9,46	11,60	0:45	12:15		
RZ	Remote refuel							
3	Distance to next refuel	18,54	65,26	83,80				
8			11,20	11,20	0:27	12:42		
SS 8		16,40				12:45		
9			3,80	20,20	0:22	13:07		
SS 9		2,14				13:10		
9A	Regroup zone IN		50,26	52,40	0:55	14:05		
	Regrouping Liepāja				0:50			
9B	Regroup zone OUT/Service IN					14:55		
	Service C Liepāja	37,08	115,32	152,40	0:30			
9C	Service OUT					15:25		
RZ	Refuel Liepāja							
4	Distance to next refuel	27,63	82,01	100,70				
10			62,30	62,30	1:12	16:07		
SS 10		8,94				16:10		
11			5,66	14,60	0:17	16:27		
SS 11		9,75				16:30		
12			14,05	23,80	0:37	17:07		
SS 12		8,94				17:10		
RZ	Remote refuel							
5	Distance to next refuel	0,00	55,76	55,76				
12A	Regroup zone IN		55,76	64,70	1:00	18:10		
	Regrouping Liepāja				0:10			
12B	Regroup zone OUT/Service IN					18:20		
	Service D Liepāja	27,63	137,77	165,40	0:15			
12B	Service D Liepāja OUT					18:35		
RZ	Refuel Liepāja							
6	Distance to next refuel	5,00	3,90	8,90				
13			2,60	2,60	0:12	18:47		
SS 13		2,50				18:50		
14			1,30	3,80	0:12	19:02		
SS 14		2,50				19:05		
	Rally Finish			2,50				
Leg 2 totals /2.aplis kopā		69,71	256,99	326,70				

Section / Sekcija 2

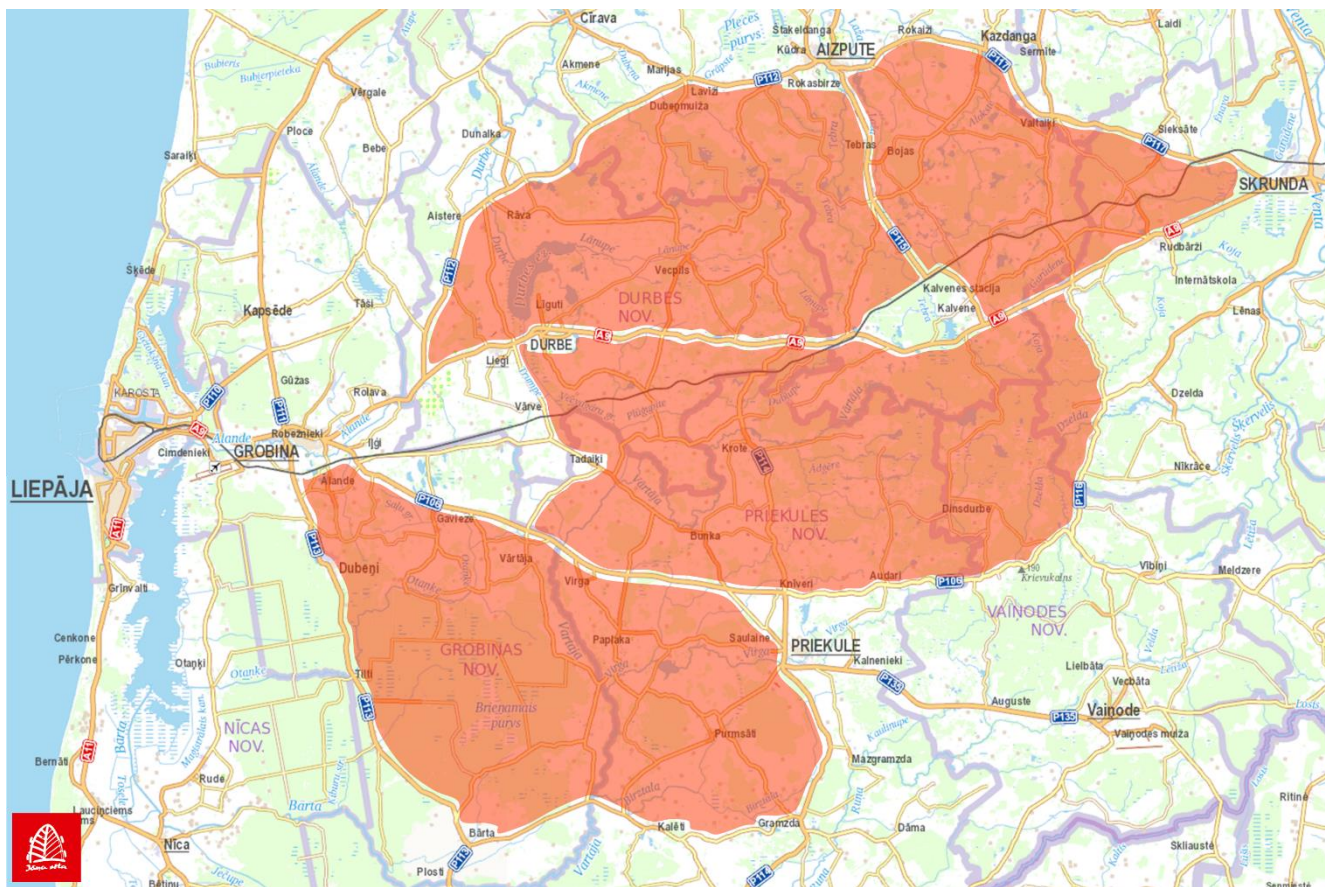
Section / Sekcija 3

Section / Sekcija 4

Rally Totals					
	No of SS	SS dist	Liaison dist	Total dist	
Leg 1	5	53,71	135,73	189,44	28,4%
Leg 2	9	69,71	256,99	326,70	21,3%
Overall totals	14	123,42	392,72	516,14	23,9%



12. FORBIDDEN AREAS



Kartē atzīmētais reģions ir aizliegtā zona braucējiem, dalībniekiem un viņu pārstāvjiem. Aizliegts pārvietoties pa ceļiem, kas atrodas trases atrašanās vietas shēmā norādītajā teritorijā.



The marked area in this map is the forbidden area for competitors. For drivers, entrants and their representatives it is strictly forbidden to be present on roads located in the particular territory of the route.